

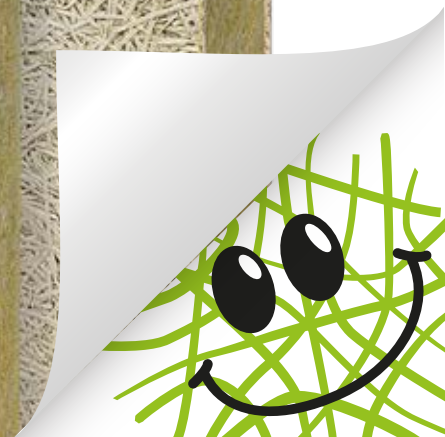


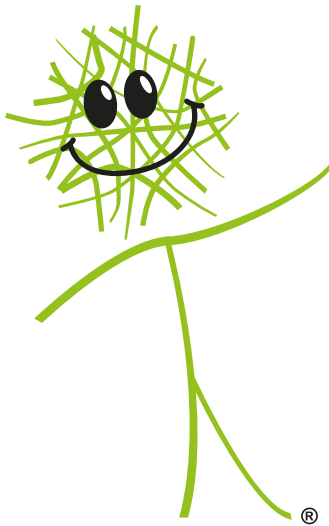
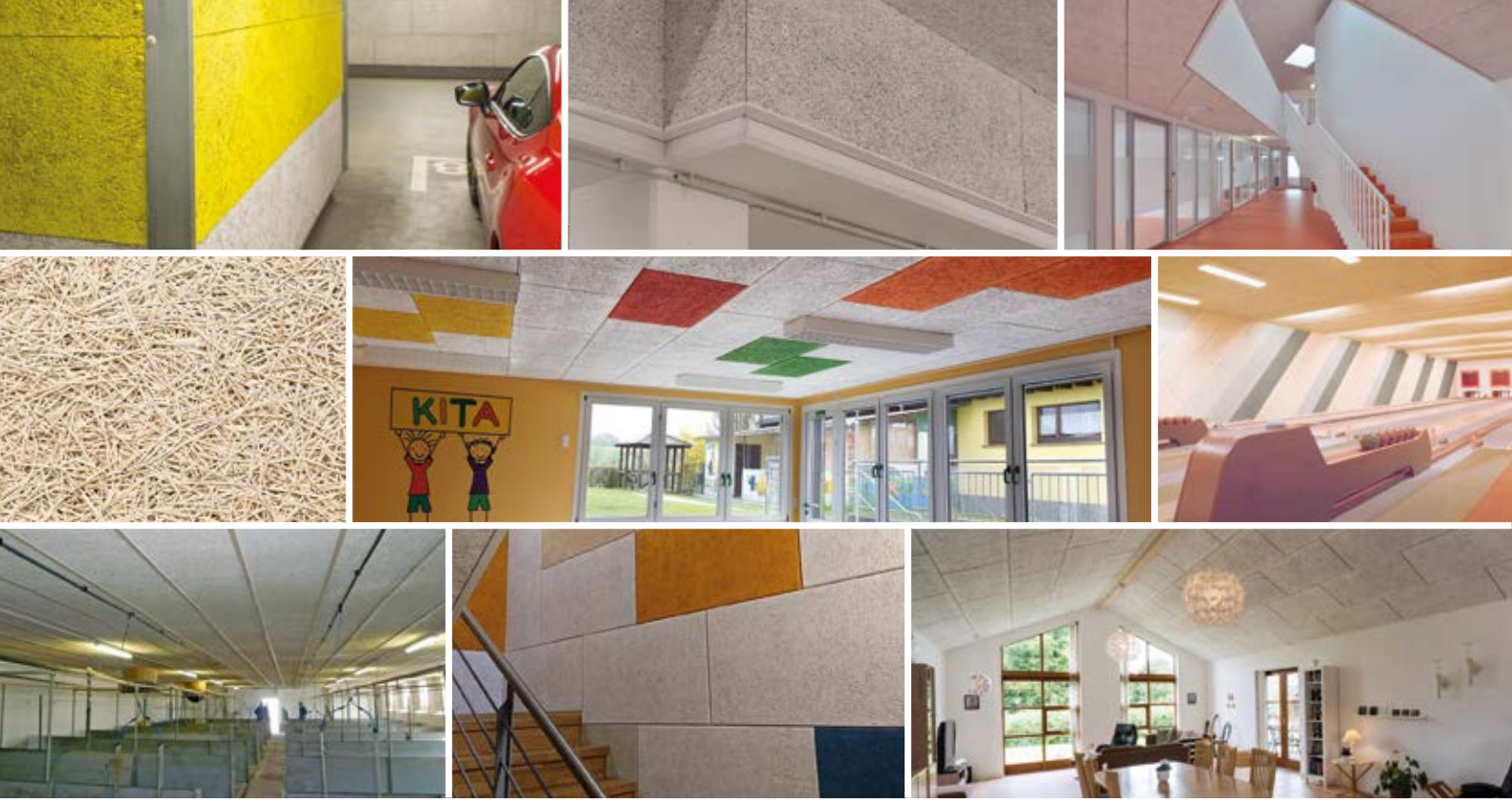
fibrolith[®]
by **SOPREMA**

Natürlich Holzwolle

Product range

Boards for heat-, sound insulation and fire protection





Fibro, the mascot of Fibrolith insulation from Kempenich explains to architects, contractors, builders' merchants and homebuilders the benefits and properties of insulation boards made of natural wood wool for thermal, acoustic and fire protection.
www.fibrolith.de/en

Imprint

Fibrolith Dämmstoffe GmbH
 An der L83
 D-56746 Kempenich

Phone: +49 (0) 26 55 / 95 92-0
 Fax: +49 (0) 26 55 / 95 92-18
 E-Mail: info@fibrolith.de
 Web: www.fibrolith.de

© by Fibrolith Dämmstoffe GmbH
 Printed in Germany

This product range is valid from 01.05.2019 and supersedes earlier ones. Our general terms and conditions of delivery and payment apply. 2019/V1

Basement garage ceiling - embedded in concrete **1**

Fibro-THERM-S /3 A - 040 A2 WD nature, three layer, for concrete embedding applications with rabbet edges Page 4

Fibro-rabbet anchor Page 5

Fibro-stainless steel anchor

Basement garage ceiling - fastened with anchor or screwed **2**

Fibro-THERM-S /3 N - 040 A2 WD nature, three layer, for retrofitting Page 6

Fibro-THERM-S /2 N - 035 A2 WD nature, Dual layer, with straight edges, for retrofitting

Fibro-insulating anchor, galvanized Page 7

Fibro-insulating anchor, steel A2

Fibro-cover caps, wood wool texture, white and beige

Concrete screw DDS

Page 8

Concrete screw TIS

Basement ceiling - embedded in concrete **3**

Fibro-DUR /3 - 032 B2 WD nature, three layer, for concrete embedding applications with rabbet edges Page 9

Fibro-DUR /3 - 032 SE WD nature, three layer, for concrete embedding applications with rabbet edges

Fibro-THERM-S /3 A - 040 B1 WD nature, three layer, for concrete embedding applications with rabbet edges Page 10

Fibro-rabbet anchor Page 11

Fibro-stainless steel anchor

Basement ceiling - fastened with anchor or screwed **4**

Fibro-DUR /3 - 032 B2 WD nature, three layer, for retrofitting Page 12

Fibro-DUR /2 - 032 B2 WD nature, Dual layer, with straight edges, for retrofitting

Fibro-DUR /3 - 032 SE WD nature, three layer, for retrofitting Page 13

Fibro-DUR /2 - 032 SE WD nature, Dual layer, with straight edges, for retrofitting

Fibro-THERM-S /3 N - 040 B1 WD nature, three layer, for retrofitting Page 14

Fibro-THERM-S /2 N - 035 B1 WD nature, Dual layer, with straight edges, for retrofitting

Fibro-insulating anchor, galvanized Page 15

Fibro-insulating anchor, steel A2

Fibro-cover caps, wood wool texture, white and beige

Concrete screw DDS

Page 16

Concrete screw TIS

Walls / facades - plaster base, interior insulation, exterior insulation **5**

Fibro-light-weight-board - 090 Page 17

Fibro-THERM-S /3 N - 040 B1 WD nature, three layer, for retrofitting

Fibro-DUR /3 - 032 SE WD nature, three layer, for retrofitting Page 18

Fibro-DUR /2 - 032 SE WD nature, Dual layer, with straight edges, for retrofitting

Fibro-DUR /3 - 040 B2 WD nature, three layer, for retrofitting Page 19

Fibro-insulating anchor, galvanized

Prefabricated buildings - plaster base, interior insulation, exterior insulation 6

Fibro-THERM-S /3 N - 040 B1 WD nature, three layer, for retrofitting	Page 20
Fibro-DUR /3 - 032 SE WD nature, three layer, for retrofitting	Page 21
Fibro-DUR /2 - 032 SE WD nature, Dual layer, with straight edges, for retrofitting	
Fibro-DUR /3 - 040 B2 WD nature, three layer, for retrofitting	Page 22
Fibro-light-weight-board - 090	

Industrial constructions - sound-absorbing wall and ceiling paneling 7

Fibro-THERM-S /2 N - 035 A2 WD nature, Dual layer, with straight edges, for retrofitting	Page 23
Fibro-THERM-S /2 N - 035 B1 WD nature, Dual layer, with straight edges, for retrofitting	
Fibro-insulating anchor, galvanized	Page 24
Fibro-insulating anchor, steel A2	
Fibro-cover caps, wood wool texture, white and beige	
Concrete screw DDS	Page 25
Concrete screw TIS	

Agricultural constructions 8

Fibrolith stall ventilation panels	Page 26
------------------------------------	---------

Fibro-end profiles L and F, express nails 9

Fibro-edge profile L	Page 27
Fibro-express nails	
Fibro-edge profile F	Page 28

Glossary 10

Page 29

Logistics data 11

Page 30

World first!

All products are available with PURE GENIUS coating for an extra charge.

Indoor air cleaning for your health.

Additional information: www.fibrolith.de



Fibro-THERM-S /3 A - 040 A2 WD nature, three layer, for embedding in cement



Basement ceilings-/basement garage insulation boards, MW core
 According to DIN EN 13168, WW-C/3 MW WLG 040 DI dm / WI dm
 Mineral wool multi-layer board
 DIN EN 13501: non-flammable, A2-S1, d0
 with mineral wool core according to DIN EN 13162, A1 non-flammable
 According to DIN 4102
 Fire protection F 90-AB to F 180-AB, embedded in concrete
 in covered car parks > 1000 m² effective area as per Garage Regulations
 (GarVo). Heightened biosolubility, does not present any health risk.
 mineral bound, fine wool (approximately 2 mm fibre width)
with rabbet edges on all sides, for embedding into concrete

New item no.	Old item no.	Thick-ness in mm	Number of layers	Standard length in mm	Standard width in mm	R _D m ² -K/W	PU per double pal.	
50403 72 050 4120 00000	50511	50	/ 3	2000	600	1,06	48,0	m ²
50403 72 060 4120 00000	50611	60	/ 3	2000	600	1,33	38,4	m ²
50403 72 075 4120 00000	50761	75	/ 3	2000	600	1,70	31,2	m ²
50403 72 100 4120 00000	51011	100	/ 3	2000	600	2,33	24,0	m ²
50403 72 125 4120 00000	51261	125	/ 3	2000	600	2,98	19,2	m ²
50403 72 150 2120 00000	51511	150	/ 3	1000	600	3,57	16,8	m ²
50403 72 175 2120 00000	51761	175	/ 3	1000	600	4,17	14,4	m ²
50403 72 200 2120 00000	52011	200	/ 3	1000	600	4,88	12,0	m ²

against extra charge: The loss in cover for Fibro-THERM-S boards with rabbet edges 4%.

Super-fine wood wool (approx. 1 mm width) m²

Closed longitudinal and/or horizontal edges lfm



Fibro-rabbit anchor



non-flammable, additional adhesion safety of wood wool multi-layer boards WWC 3 with rabbet edges all around as permanent form when used with concrete.. Anchor are invisible at the ceiling surface.
Requirement: at least 3 pieces/sqm
(for Fire protection F 90-AB at least 6 pieces/m² in accordance with test certificate)

New item no.	Old item no.	for board	anchor		content
		thickness in mm	length		pieces
80 8301	8301	50	25,0	mm	250
80 8302	8302	60 / 75	37,5	mm	250
80 8303	8303	100	50,0	mm	250
80 8304	8304	125	62,5	mm	250

Fibro-stainless steel anchor



non-flammable, additional adhesion safety of wood wool multi-layer boards WW-C3 as permanent form when used with concrete..
Requirement: at least 6 pieces/sqm

New item no.	Old item no.	for board	anchor		content
		thickness in mm	length		pieces
80 8201	8201	50	95	mm	250
80 8202	8202	60 / 75	115	mm	250
80 8203	8203	100	150	mm	250
80 8204	8204	125	165	mm	250
80 8205	8205	150	200	mm	200
80 8206	8206	175	225	mm	200
80 8207	8207	200	250	mm	200



Fibro-THERM-S boards with stainless steel anchorn embedded in concrete

Fibro-THERM-S /3 N - 040 A2 WD nature, three layer, for retrofitting



Basement ceilings-/basement garage insulation boards, MW core
 According to DIN EN 13168, WW-C/3 MW WLG 040 DI dm / WI dm
 Mineral wool multi-layer board
 DIN EN 13501: non-flammable, A2-S1, d0
 with mineral wool core according to DIN EN 13162, A1 non-flammable
 According to DIN 4102
 Fire protection F 90-AB to F 120-AB -retrofitted
 in covered car parks > 1000 m² effective area as per Garage Regulations
 (GarVo). Heightened biosolubility, does not present any health risk.
 mineral bound, fine wool (approximately 2 mm fibre width)
with straight edges, for retrofitting

New item no.	Old item no.	Thick- ness in mm	Number of layers	Standard length in mm	Standard width in mm	R _D m ² -K/W	PU per double pal.
50403 72 050 4110 00000	50512	50	/ 3	1000*	600	1,06	48,0 m ²
50403 72 060 4110 00000	50612	60	/ 3	1000*	600	1,33	38,4 m ²
50403 72 075 4110 00000	50762	75	/ 3	1000*	600	1,70	31,2 m ²
50403 72 100 4110 00000	51012	100	/ 3	1000*	600	2,33	24,0 m ²
50403 72 125 4110 00000	51262	125	/ 3	1000*	600	2,98	19,2 m ²
50403 72 150 2120 00000	51552	150	/ 3	1000*	600	3,57	16,8 m ²
50403 72 175 2120 00000	51762	175	/ 3	1000*	600	4,17	14,4 m ²
50403 72 200 2120 00000	52012	200	/ 3	1000*	600	4,88	12,0 m ²

* also available in a board length of 2000 mm

against extra charge:

- rabbet edges all sides
- white on one side, indoor use (similar to RAL 9010)
- Super-fine wood wool (approx. 1 mm width)
- Closed longitudinal and/or horizontal edges

Fibro-THERM-S /2 N - 035 A2 WD nature, dual layer, with straight edges



Basement ceilings-/basement garage insulation boards, MW core
 According to DIN EN 13168, WW-C/2 MW 035 WI dk / DI dk
 Multi-purpose insulating boards MW-core according to DIN EN 13168,
 Dual layer, with straight edges, for retrofitting
 DIN EN 13501:non-flammable, A2-s1, d0
 with mineral wool core according to DIN EN 13162, A1 non-flammable
 (DIN 4102). Fire protection F 90-AB to F 120-AB, retrofitted
 in covered car parks > 1000 m² effective area as per Garage Regulations
 (GarVo). Heightened biosolubility, does not present any health risk.
 mineral bound, fine wool (approximately 2 mm fibre width)
with straight edges, for retrofitting.

New item no.	Old item no.	Thick- ness in mm	Number of layers	Standard length in mm	Standard width in mm	R _D m ² -K/W	PU per double pal.
50352 72 050 2110 00000	5058	50	/ 2	1000	600	1,28	48,0 m ²
50352 72 060 2110 00000	5068	60	/ 2	1000	600	1,58	38,4 m ²
50352 72 075 2110 00000	5085	75	/ 2	1000	600	1,97	31,2 m ²
50352 72 100 2110 00000	5107	100	/ 2	1000	600	2,70	24,0 m ²
50352 72 125 2110 00000	5135	125	/ 2	1000	600	3,38	19,2 m ²
50352 72 150 2120 00000	5156	150	/ 2	1000	600	4,17	16,8 m ²
50352 72 175 2120 00000	5182	175	/ 2	1000	600	4,86	14,4 m ²
50352 72 200 2120 00000	5206	200	/ 2	1000	600	5,56	12,0 m ²

against extra charge:

- white on one side, indoor use (similar to RAL 9010)
- Super-fine wood wool (approx. 1 mm width)
- small beveled edges
- Closed longitudinal and/or horizontal edges

Fibro-insulating anchor, galvanized



Metal anchor with special expanding pin
for bore hole \varnothing 8 mm, disc \varnothing 35 mm
Requirement: at least 6 pieces/board at a board length of 2000 mm,
at least 4 pieces/board at a board length of 1000 mm

New item no.	Old item no.	for board	anchor		content pieces
		thickness in mm	length		
808101	8101	35	80	mm	250
808102	8102	50 / 60	110	mm	250
808103	8103	75 / 100	140	mm	250
808104	8104	125	170	mm	250
808105	8105	150	200	mm	250
808106	8106	160/175/200	250	mm	200

Fibro-insulating anchor, steel A2



Metal anchor with special expanding pin
for bore hole \varnothing 8 mm, disc \varnothing 35 mm,
Requirement: at least 6 pieces/board at a board length of 2000 mm,
at least 4 pieces/board at a board length of 1000 mm

New item no.	Old item no.	for board	anchor		content pieces
		thickness in mm	length		
808001	8001	35	80	mm	250
808002	8002	35 / 50 / 60	110	mm	250
808003	8003	75 / 100	140	mm	250
808004	8004	125	170	mm	250
808005	8005	150	200	mm	250
808006	8006	160/175/200	250	mm	200

Fibro-cover caps, wood wool texture



Cover caps for insulating anchor, galvanized or steel A2
Available in white or beige
 \varnothing 35 mm

New item no.	Old item	Colour	content pieces
808010	8010	white	250
808011	8011	beige	250

Concrete screw DDS



Rust-protected steel screw with special thread.
 To fasten wood wool and multi-layer boards directly to concrete. Ø head approx. 25 mm, Ø bore hole: 6 mm, installation depth: approx. 25 mm
 Requirement: at least 6 pieces/board at a board length of 2000 mm, at least 4 pieces/board at a board length of 1000 mm

New item no.	Old item no.	for board thickness in mm	anchor length	Colour	content pieces
808906	8906	25	50 mm	white	100
808908	8908	35 / 50	75 mm	white	100
808910	8910	60	85 mm	white	100
808912	8912	75	100 mm	white	100
808914	8914	100	125 mm	white	100
808916	8916	125	150 mm	white	100
808918	8918	150	175 mm	white	100
808920	8920	175	200 mm	white	100
808907	8907	25	50 mm	beige	100
808909	8909	35 / 50	75 mm	beige	100
808911	8911	60	85 mm	beige	100
808913	8913	75	100 mm	beige	100
808915	8915	100	125 mm	beige	100
808917	8917	125	150 mm	beige	100
808919	8919	150	175 mm	beige	100
808921	8921	175	200 mm	beige	100

Concrete screw TIS



grey head available on request

Insulating screw for protection against the heat, cold or fire
 Made of electro-galvanized steel
 To fasten wood wool and multi-layer boards directly to concrete C20/25 bis C50/60 Ø head approx. 35 mm, Ø bore hole: 6 mm, installation depth: approx. 25 mm
 Requirement: at least 6 pieces/board at a board length of 2000 mm, at least 4 pieces/board at a board length of 1000 mm

New item no.	Old item no.	for board thickness in mm	anchor length	Colour	content pieces
887075	87075	35 / 50	75 mm	beige	100
887085	87085	60	85 mm	beige	100
887100	87100	75	100 mm	beige	100
887125	87125	100	125 mm	beige	100
887150	87150	125	150 mm	beige	100
887175	87175	150	175 mm	beige	100
887200	87200	175	200 mm	beige	100
887225	87225	200	225 mm	beige	100
888075	88075	35 / 50	75 mm	white	100
888085	88085	60	85 mm	white	100
888100	88100	75	100 mm	white	100
888125	88125	100	125 mm	white	100
888150	88150	125	150 mm	white	100
888175	88175	150	175 mm	white	100
888200	88200	175	200 mm	white	100
888225	88225	200	225 mm	white	100

Fibro-DUR 3 - 032 B2 WD nature, three layer, with rabbet edges

Basement ceilings-insulation boards EPS core
According to DIN EN 13168, WW-C/3 MW WLG 032DI dm / WI dm
Multi-purpose insulation board, three layered
Polystyrene rigid foam core DIN EN 13163
mineral bound, fine wool (approximately 2 mm fibre width)
Application type DIN V 4108-10: WI dm / DI dm / WH dg
DIN 4102: B2 normal flammability

with rabbet edges on all sides, for embedding into concrete

(Picture without rabbet edges)

New item no.	Old item no.	Thick- ness in mm	Number of layers	Standard length in mm	Standard width in mm	R ₀ m ² ·K/W	PU per double pal.	
30323 72 035 4120 00000	33035	35	/ 3	2000	600	0,95	120,0	m ²
30323 72 050 4120 00000	33050	50	/ 3	2000	600	1,43	84,0	m ²
30323 72 060 4120 00000	33060	60	/ 3	2000	600	1,76	72,0	m ²
30323 72 075 4120 00000	33075	75	/ 3	2000	600	2,21	60,0	m ²
30323 72 100 4120 00000	34100	100	/ 3	2000	600	3,03	48,0	m ²
30323 72 125 4120 00000	34125	125	/ 3	2000	600	3,79	38,4	m ²

against extra charge:
see below

The loss in cover for Fibro-DUR boards with rabbet edges 4%.

Fibro-DUR 3 - 032 SE WD nature, three layer, with rabbet edges

Basement ceilings-insulation boards EPS core
According to DIN EN 13168, WW-C/3 MW WLG 032 DI dm / WI dm
Multi-purpose insulation board, three layered
Polystyrene rigid foam core DIN EN 13163
mineral bound, fine wool (approximately 2 mm fibre width)
Application type DIN V 4108-10: WI dm / DI dm / WH dg
C-S2, d0 flame-retardant

with rabbet edges on all sides, for embedding into concrete

(Picture without rabbet edges)

New item no.	Old item no.	Thick- ness in mm	Number of layers	Standard length in mm	Standard width in mm	R ₀ m ² ·K/W	PU per double pal.	
35323 72 050 4120 00000		50	/ 3	2000	600	1,43	84,0	m ²
35323 72 060 4120 00000		60	/ 3	2000	600	1,76	72,0	m ²
35323 72 075 4120 00000		75	/ 3	2000	600	2,21	60,0	m ²
35323 72 100 4120 00000		100	/ 3	2000	600	3,03	48,0	m ²

Other Thicknesses on request.

against extra charge:

Super-fine wood wool (approx. 1 mm width)

Fibro-THERM-S /3 A - 040 B1 WD nature, three layer, for embedding in cement



Basement ceilings-/basement garage insulation boards, MW core
 According to DIN EN 13168, WW-C/3 MW WLG 040 DI dm / WI dm
 Mineral wool multi-layer board
 DIN EN 13501: flame-retardant, B-S1, d0
 with mineral wool core according to DIN EN 13162, A1 non-flammable
 According to DIN 4102
 Fire protection F 90-AB to F 180-AB, embedded in concrete
 in covered car parks > 1000 m² effective area as per Garage Regulations
 (GarVo). Heightened biosolubility, does not present any health risk.
 mineral bound, fine wool (approximately 2 mm fibre width)
with rabbet edges on all sides, for embedding into concrete

New item no.	Old item no.	Thick- ness in mm	Number of layers	Standard length in mm	Standard width in mm	R _D m ² -K/W	PU per double pal.	
40403 72 050 4120 00000	40511	50	/ 3	2000	600	1,06	48,0	m ²
40403 72 060 4120 00000	40611	60	/ 3	2000	600	1,33	38,4	m ²
40403 72 075 4120 00000	40761	75	/ 3	2000	600	1,70	31,2	m ²
40403 72 100 4120 00000	41011	100	/ 3	2000	600	2,33	24,0	m ²
40403 72 125 4120 00000	41261	125	/ 3	2000	600	2,98	19,2	m ²
40403 72 150 2120 00000	41511	150	/ 3	1000	600	3,57	16,8	m ²
40403 72 175 2120 00000	41761	175	/ 3	1000	600	4,17	14,4	m ²
40403 72 200 2120 00000	42011	200	/ 3	1000	600	4,88	12,0	m ²

against extra charge:

Super-fine wood wool (approx. 1 mm width)
 Closed longitudinal and/or horizontal edges

The loss in cover for Fibro-THERM-S boards with rabbet edges 4%.

Fibro-THERM-S Platten
 embedded in concrete



Fibro-rabbit anchor



non-flammable, additional adhesion safety of wood wool multi-layer boards WWC 3 with rabbet edges all around as permanent form when used with concrete.. Anchor are invisible at the ceiling surface.
Requirement: at least 3 pieces/sqm
(for Fire protection F 90-AB at least 6 pieces/m² in accordance with test certificate)

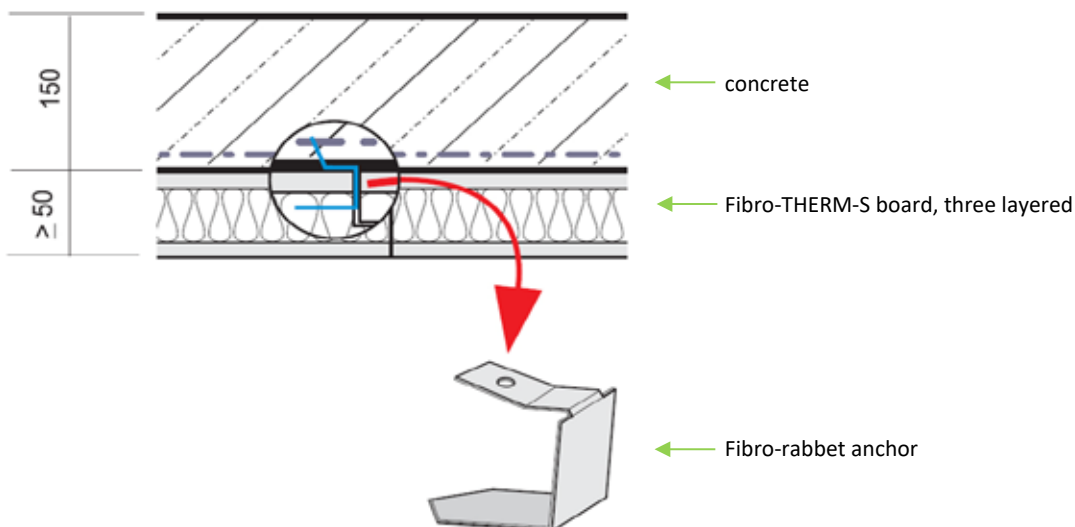
New item no.	Old item no.	for board	anchor		content pieces
		thickness in mm	length		
8301	8301	50	25,0	mm	250
8302	8302	60 / 75	37,5	mm	250
8303	8303	100	50,0	mm	250
8304	8304	125	62,5	mm	250

Fibro-stainless steel anchor



non-flammable, additional adhesion safety of wood wool multi-layer boards WW-C3 as permanent form when used with concrete.. Requirement: at least 6 pieces/sqm

New item no.	Old item no.	for board	anchor		content pieces
		thickness in mm	length		
8201	8201	50	95	mm	250
8202	8202	60 / 75	115	mm	250
8203	8203	100	150	mm	250
8204	8204	125	165	mm	250
8205	8205	150	200	mm	200
8206	8206	175	225	mm	200
8207	8207	200	250	mm	200



Fibro-DUR 3 - 032 B2 WD nature, three layer, for retrofitting



Basement ceilings-insulation boards EPS core
 According to DIN EN 13168, WW-C/3 MW WLG 032 DI dm / WI dm
 Multi-purpose insulation board, three layered
 Polystyrene rigid foam core DIN EN 13163
 mineral bound, fine wool (approximately 2 mm fibre width)
 Application type DIN V 4108-10: WI dm / DI dm / WH dg
 DIN 4102: B2 normal flammability
with straight edges for retrofitting

New item no.	Old item no.	Thick- ness in mm	Number of layers	Standard length in mm	Standard width in mm	R _D m ² -K/W	PU per double pal.	
30323 72 035 4110 00000	33035	35	/ 3	2000	600	0,95	120,0	m ²
30323 72 050 4110 00000	33050	50	/ 3	2000	600	1,43	84,0	m ²
30323 72 060 4110 00000	33060	60	/ 3	2000	600	1,76	72,0	m ²
30323 72 075 4110 00000	33075	75	/ 3	2000	600	2,21	60,0	m ²
30323 72 100 4110 00000	34100	100	/ 3	2000	600	3,03	48,0	m ²
30323 72 125 4110 00000	34125	125	/ 3	2000	600	3,79	38,4	m ²

against extra charge:
 see below

Alternative size 1000x600 mm

Fibro-DUR 2 - 032 B2 WD nature, Dual layer, with straight edges, for retrofitting



Basement ceilings-insulation boards EPS core
 According to DIN EN 13168, WW-C/2 MW WLG 032 DI dm / WI dm
 Multi-purpose insulation board, Dual layer, with straight edges,
 for retrofitting. Polystyrene rigid foam core DIN EN 13163
 mineral bound, fine wool (approximately 2 mm fibre width)
 Application type DIN V 4108-10: WI dm / DI dm / WH dg
 DIN 4102: B2 normal flammability
with straight edges for retrofitting

New item no.	Old item no.	Thick- ness in mm	Number of layers	Standard length in mm	Standard width in mm	R _D m ² -K/W	PU per double pal.	
30322 72 050 4110 00000		50	/ 2	2000	600	1,52	84,0	m ²
30322 72 060 4110 00000		60	/ 2	2000	600	1,82	72,0	m ²
30322 72 075 4110 00000		75	/ 2	2000	600	2,34	60,0	m ²
30322 72 100 4110 00000		100	/ 2	2000	600	3,13	48,0	m ²
30322 72 125 4110 00000		125	/ 2	2000	600	3,91	38,4	m ²

against extra charge:
 white on one side, indoor use (similar to RAL 9010)
 Super-fine wood wool (approx. 1 mm width)
 small beveled edges
 rabbet edges all sides
 Closed longitudinal and/or horizontal edges

Fibro-DUR 3 - 032 SE WD nature, three layer, for retrofitting



Basement ceilings-insulation boards EPS core
 According to DIN EN 13168, WW-C/3 MW WLG 032 DI dm / WI dm
 Multi-purpose insulation board, three layered
 Polystyrene rigid foam core DIN EN 13163
 mineral bound, fine wool (approximately 2 mm fibre width)
 Application type DIN V 4108-10: WI dm / DI dm / WH dg
 C-S2, d0, flame-retardant
with straight edges for retrofitting

New item no.	Old item no.	Thick- ness in mm	Number of layers	Standard length in mm	Standard width in mm	R _D m ² ·K/W	PU per double pal.	
35323 72 050 4110 00000		50	/ 3	2000	600	1,43	84,0	m ²
35323 72 060 4110 00000		60	/ 3	2000	600	1,76	72,0	m ²
35323 72 075 4110 00000		75	/ 3	2000	600	2,21	60,0	m ²
35323 72 100 4110 00000		100	/ 3	2000	600	3,03	48,0	m ²

Other Thicknesses on request.

against extra charge:

see below

Fibro-DUR 2 - 032 SE WD nature, dual layer, with straight edges, for retrofitting



Basement ceilings-insulation boards EPS core
 According to DIN EN 13168, WW-C/2 MW WLG 032 DI dm / WI dm
 Multi-purpose insulation board, Dual layer, with straight edges,
 for retrofitting. Polystyrene rigid foam core DIN EN 13163
 mineral bound, fine wool (approximately 2 mm fibre width)
 Application type DIN V 4108-10: WI dm / DI dm / WH dg
 C-S2, d0, flame-retardant
with straight edges for retrofitting

New item no.	Old item no.	Thick- ness in mm	Number of layers	Standard length in mm	Standard width in mm	R _D m ² ·K/W	PU per double pal.	
35322 72 050 4110 00000		50	/ 2	2000	600	1,52	84,0	m ²
35322 72 060 4110 00000		60	/ 2	2000	600	1,82	72,0	m ²
35322 72 075 4110 00000		75	/ 2	2000	600	2,34	60,0	m ²
35322 72 100 4110 00000		100	/ 2	2000	600	3,13	48,0	m ²

Other Thicknesses on request.

against extra charge:

- white on one side, indoor use (similar to RAL 9010)
- Super-fine wood wool (approx. 1 mm width)
- small beveled edges
- rabbet edges all sides
- Closed longitudinal and/or horizontal edges

Fibro-THERM-S /3 N - 040 B1 WD nature, three layer, for retrofitting



Basement ceilings-/basement garage insulation boards, MW core
 According to DIN EN 13168, WW-C/3 MW WLG 040 DI dm / WI dm
 Mineral wool multi-layer board
 DIN EN 13501: flame-retardant, B-S1, d0
 with mineral wool core according to DIN EN 13162, A1 non-flammable
 According to DIN 4102
 Fire protection F 90-AB to F 180-AB, retrofitted
 in covered car parks > 1000 m² effective area as per Garage Regulations (GarVo). Heightened biosolubility, does not present any health risk.
 mineral bound, fine wool (approximately 2 mm fibre width)
with straight edges, for retrofitting

New item no.	Old item no.	Thick-ness in mm	Number of layers	Standard length in mm	Standard width in mm	R _D m ² -K/W	PU per double pal.	
40403 72 050 4110 00000	40512	50	/ 3	1000*	600	1,06	48,0	m ²
40403 72 060 4110 00000	40612	60	/ 3	1000*	600	1,33	38,4	m ²
40403 72 075 4110 00000	40762	75	/ 3	1000*	600	1,70	31,2	m ²
40403 72 100 4110 00000	41012	100	/ 3	1000*	600	2,33	24,0	m ²
40403 72 125 4110 00000	41262	125	/ 3	1000*	600	2,98	19,2	m ²
40403 72 150 4110 00000	41512	150	/ 3	1000*	600	3,57	16,8	m ²
40403 72 175 4110 00000	41762	175	/ 3	1000*	600	4,17	14,4	m ²
40403 72 200 4110 00000	42012	200	/ 3	1000*	600	4,88	12,0	m ²

against extra charge:
 see below

Fibro-THERM-S /2 N - 035 B1 WD nature, Dual layer, with straight edges, for retrofitting



Basement ceilings-/basement garage insulation boards, MW core
 According to DIN EN 13168, WW-C/2 MW 035 WI dk / DI dk
 Multi-purpose insulating boards MW-core according to DIN EN 13168,
 Dual layer, with straight edges, for retrofitting
 DIN EN 13501:flame-retardant, B-s1, d0
 with mineral wool core according to DIN EN 13162, A1 non-flammable (DIN 4102). Fire protection F 90-AB to F 120-AB, retrofitted
 in covered car parks > 1000 m² effective area as per Garage Regulations (GarVo). Heightened biosolubility, does not present any health risk.
 mineral bound, fine wool (approximately 2 mm fibre width)
with straight edges, for retrofitting.

New item no.	Old item no.	Thick-ness in mm	Number of layers	Standard length in mm	Standard width in mm	R _D m ² -K/W	PU per double pal.	
40352 72 050 2110 00000	4059	50	/ 2	1000	600	1,28	48,0	m ²
40352 72 060 2110 00000	4070	60	/ 2	1000	600	1,58	38,4	m ²
40352 72 075 2110 00000	4084	75	/ 2	1000	600	1,97	31,2	m ²
40352 72 100 2110 00000	4112	100	/ 2	1000	600	2,70	24,0	m ²
40352 72 125 2110 00000	4136	125	/ 2	1000	600	3,38	19,2	m ²
40352 72 150 2120 00000	4157	150	/ 2	1000	600	4,17	16,8	m ²
40352 72 175 2120 00000	4180	175	/ 2	1000	600	4,86	14,4	m ²
40352 72 200 2120 00000	4206	200	/ 2	1000	600	5,56	12,0	m ²

against extra charge:
 white on one side, indoor use (similar to RAL 9010)
 Super-fine wood wool (approx. 1 mm width)
 small beveled edges
 Closed longitudinal and/or horizontal edges

Fibro-insulating anchor, galvanized



Metal anchor with special expanding pin
for bore hole \varnothing 8 mm, disc \varnothing 35 mm
Requirement: at least 6 pieces/board at a board length of 2000 mm,
at least 4 pieces/board at a board length of 1000 mm

New item no.	Old item no.	for board	anchor		content pieces
		thickness in mm	length		
808101	8101	35	80	mm	250
808102	8102	50 / 60	110	mm	250
808103	8103	75 / 100	140	mm	250
808104	8104	125	170	mm	250
808105	8105	150	200	mm	250
808106	8106	160/175/200	250	mm	200

Fibro-insulating anchor, steel A2



Metal anchor with special expanding pin
for bore hole \varnothing 8 mm, disc \varnothing 35 mm,
Requirement: at least 6 pieces/board at a board length of 2000 mm,
at least 4 pieces/board at a board length of 1000 mm

New item no.	Old item no.	for board	anchor		content pieces
		thickness in mm	length		
808001	8001	35	80	mm	250
808002	8002	35 / 50 / 60	110	mm	250
808003	8003	75 / 100	140	mm	250
808004	8004	125	170	mm	250
808005	8005	150	200	mm	250
808006	8006	160/175/200	250	mm	200

Fibro-cover caps, wood wool texture



Cover caps for insulating anchor, galvanized or steel A2
available in white, or beige
 \varnothing 35 mm

New item no.	Old item no.	Colour	content pieces
		808010	
808011	8011	beige	250

Concrete screw DDS



Rust-protected steel screw with special thread.

To fasten wood wool and multi-layer boards directly to concrete. Ø head approx. 25 mm, Ø bore hole: 6 mm, Ø bore hole: 6 mm, installation depth: approx. 25 mm
Requirement: at least 6 pieces/board at a board length of 2000 mm, at least 4 pieces/board at a board length of 1000 mm

New item no.	Old item no.	for board thickness in mm	anchor length	Colour	content pieces
808906	8906	25	50 mm	white	100
808908	8908	35 / 50	75 mm	white	100
808910	8910	60	85 mm	white	100
808912	8912	75	100 mm	white	100
808914	8914	100	125 mm	white	100
808916	8916	125	150 mm	white	100
808918	8918	150	175 mm	white	100
808920	8920	175	200 mm	white	100
808907	8907	25	50 mm	beige	100
808909	8909	35 / 50	75 mm	beige	100
808911	8911	60	85 mm	beige	100
808913	8913	75	100 mm	beige	100
808915	8915	100	125 mm	beige	100
808917	8917	125	150 mm	beige	100
808919	8919	150	175 mm	beige	100
808921	8921	175	200 mm	beige	100

Concrete screw TIS



grauer Kopf
auf Anfrage

Insulating screw for protection against the heat, cold or fire

Made of electro-galvanized steel

To fasten wood wool and multi-layer boards directly to concrete C20/25 bis C50/60 Ø head approx. 35 mm, Ø bore hole: 6 mm, Ø bore hole: 6 mm, installation depth: approx. 25 mm
Requirement: at least 6 pieces/board at a board length of 2000 mm, at least 4 pieces/board at a board length of 1000 mm

New item no.	Old item no.	for board thickness in mm	anchor length	Colour	content pieces
887075	87075	35 / 50	75 mm	beige	100
887085	87085	60	85 mm	beige	100
887100	87100	75	100 mm	beige	100
887125	87125	100	125 mm	beige	100
887150	87150	125	150 mm	beige	100
887175	87175	150	175 mm	beige	100
887200	87200	175	200 mm	beige	100
887225	87225	200	225 mm	beige	100
888075	88075	35 / 50	75 mm	white	100
888085	88085	60	85 mm	white	100
888100	88100	75	100 mm	white	100
888125	88125	100	125 mm	white	100
888150	88150	125	150 mm	white	100
888175	88175	150	175 mm	white	100
888200	88200	175	200 mm	white	100
888225	88225	200	225 mm	white	100

Fibro-light-weight-board - 090

Multi-purpose insulating boards, homogen, According to DIN EN 13168, WW 090 WI dm / DI dm
 wood wool board, mineral bonded
 flame-retardant, B-s1, d0,
 Perfect plaster base, ecologically sound
 for embedding in cement, or for retrofitting.
 Application type according to DIN V 4108-10: DI dm / WI dm
 Not recommended for visibility application.

New item no.	Old item no.	Thick- ness in mm	Gewicht /m ²	Standard length in mm	Standard width in mm	R ₀ m ² ·K/W	PU per double pal.	
10901 72 015 4110 00000	1015	15		2000	0	0,20	144/240	m ²
10901 72 025 4110 00000	1026	25		2000	0	0,33	84/168	m ²
10901 72 035 4110 00000	1036	35		2000	0	0,47	67,2/120	m ²
10901 72 050 4110 00000	1051	50		2000	0	0,67	48/84	m ²

against extra charge:

Rabbit edges for board thickness of 35 mm or more

Fibro-THERM-S /3 N - 040 B1 WD nature, three layer, for retrofitting

Basement ceilings-/basement garage insulation boards, MW core
 According to DIN EN 13168, WW-C/3 MW WLG 040 DI dm / WI dm
 Mineral wool multi-layer board
 DIN EN 13501: flame-retardant, B-S1, d0
 with mineral wool core according to DIN EN 13162, A1 non-flammable
 According to DIN 4102
 Fire protection F 90-AB to F 180-AB, retrofitted
 in covered car parks > 1000 m² effective area as per Garage Regulations
 (GarVo). Heightened biosolubility, does not present any health risk.
 mineral bound, fine wool (approximately 2 mm fibre width)
with straight edges, for retrofitting

New item no.	Old item no.	Thick- ness in mm	Number of layers	Standard length in mm	Standard width in mm	R ₀ m ² ·K/W	PU per double pal.	
40403 72 050 4110 00000	40512	50	/ 3	1000*	600	1,06	48,0	m ²
40403 72 060 4110 00000	40612	60	/ 3	1000*	600	1,33	38,4	m ²
40403 72 075 4110 00000	40762	75	/ 3	1000*	600	1,70	31,2	m ²
40403 72 100 4110 00000	41012	100	/ 3	1000*	600	2,33	24,0	m ²
40403 72 125 4110 00000	41262	125	/ 3	1000*	600	2,98	19,2	m ²
40403 72 150 4110 00000	41512	150	/ 3	1000*	600	3,57	16,8	m ²
40403 72 175 4110 00000	41762	175	/ 3	1000*	600	4,17	14,4	m ²
40403 72 200 4110 00000	42012	200	/ 3	1000*	600	4,88	12,0	m ²

against extra charge:

rabbit edges all sides

Super-fine wood wool (approx. 1 mm width)

Closed longitudinal and/or horizontal edges

Fibro-DUR 3 - 032 SE WD nature, three layer, for retrofitting

Basement ceilings-insulation boards EPS core
According to DIN EN 13168, WW-C/3 MW WLG 032 DI dm / WI dm
Multi-purpose insulation board, three layered
Polystyrene rigid foam core DIN EN 13163
mineral bound, fine wool (approximately 2 mm fibre width)
Application type DIN V 4108-10: WI dm / DI dm / WH dg
C-S2, d0 flame-retardant
with straight edges, for retrofitting

New item no.	Old item no.	Thick- ness in mm	Number of layers	Standard length in mm	Standard width in mm	R _D m ² -K/W	PU per double pal.	
35323 72 050 4110 00000		50	/ 3	2000	600	1,43	84,0	m ²
35323 72 060 4110 00000		60	/ 3	2000	600	1,76	72,0	m ²
35323 72 075 4110 00000		75	/ 3	2000	600	2,21	60,0	m ²
35323 72 100 4110 00000		100	/ 3	2000	600	3,03	48,0	m ²

Other Thicknesses on request.

against extra charge:
see below

Fibro-DUR 2 - 032 SE WD nature, Dual layer, with straight edges, for retrofitting

Basement ceilings-insulation boards EPS core
According to DIN EN 13168, WW-C/2 MW WLG 032 DI dm / WI dm
Multi-purpose insulation board, Dual layer, with straight edges,
for retrofitting. Polystyrene rigid foam core DIN EN 13163
mineral bound, fine wool (approximately 2 mm fibre width)
Application type DIN V 4108-10: WI dm / DI dm / WH dg
C-S2, d0 flame-retardant
with straight edges, for retrofitting

New item no.	Old item no.	Thick- ness in mm	Number of layers	Standard length in mm	Standard width in mm	R _D m ² -K/W	PU per double pal.	
35322 72 050 4110 00000		50	/ 2	2000	600	1,52	48,0	m ²
35322 72 060 4110 00000		60	/ 2	2000	600	1,82	38,4	m ²
35322 72 075 4110 00000		75	/ 2	2000	600	2,34	31,2	m ²
35322 72 100 4110 00000		100	/ 2	2000	600	3,13	24,0	m ²

Other Thicknesses on request.

against extra charge:
Super-fine wood wool (approx. 1 mm width)
rabbet edges all sides

Fibro-DUR 3 - 040 B2 WD nature, three layer, for retrofitting

Basement ceilings-insulation boards EPS core
 According to DIN EN 13168, WW-C/3 MW WLG 040 DI dm / WI dm
 Multi-purpose insulation board, three layered
 Polystyrene rigid foam core DIN EN 13163
 mineral bound
 Application type DIN V 4108-10: WI dm / DI dm / WH dg
 DIN 4102: B2 normal flammability
with straight edges, for retrofitting
 Not recommended for visibility application

New item no.	Old item no.	Thick- ness in mm	Number of layers	Standard length in mm	Standard width in mm	R ₀ m ² -K/W	PU per double pal.	
30403 72 025 4110 00000		25	/ 3	2000	600	0,53	96,0	m ²
30403 72 035 4110 00000		35	/ 3	2000	600	0,80	67,2	m ²
30403 72 050 4110 00000		50	/ 3	2000	600	1,19	48,0	m ²
30403 72 060 4110 00000		60	/ 3	2000	600	1,46	38,4	m ²
30403 72 075 4110 00000		75	/ 3	2000	600	1,83	31,2	m ²
30403 72 100 4110 00000		100	/ 3	2000	600	2,50	24,0	m ²
30403 72 125 4110 00000		125	/ 3	2000	600	3,13	19,2	m ²

against extra charge:

Rabbit edges for board thickness of 35 mm or more

Fibro-insulating anchor, galvanized

Metal anchor with special expanding pin
 for bore hole \varnothing 8 mm, disc \varnothing 35 mm
 Requirement: at least 6 pieces/board at a board length of 2000 mm,
 at least 4 pieces/board at a board length of 1000 mm

New item no.	Old item no.	for board thickness in mm	anchor length	content pieces
808101	8101	35	80 mm	250
808102	8102	50 / 60	110 mm	250
808103	8103	75 / 100	140 mm	250
808104	8104	125	170 mm	250
808105	8105	150	200 mm	250
808106	8106	160/175/200	250 mm	200

Fibro-THERM-S /3 N - 040 B1 WD nature, three layer, for retrofitting



Basement ceilings-/basement garage insulation boards, MW core
 According to DIN EN 13168, WW-C/3 MW WLG 040 DI dm / WI dm
 Mineral wool multi-layer board
 DIN EN 13501: flame-retardant, B-S1, d0
 with mineral wool core according to DIN EN 13162, A1 non-flammable
 According to DIN 4102
 Fire protection F 90-AB to F 180-AB, retrofitted
 in covered car parks > 1000 m² effective area as per Garage Regulations
 (GarVo). Heightened biosolubility, does not present any health risk.
 mineral bound, fine wool (approximately 2 mm fibre width)
with straight edges, for retrofitting

New item no.	Old item no.	Thick- ness in mm	Number of layers	Standard length in mm	Standard width in mm	R _D m ² ·K/W	PU per double pal.
40403 72 050 4110 00000	40512	50	/ 3	1000*	600	1,06	48,0 m ²
40403 72 060 4110 00000	40612	60	/ 3	1000*	600	1,33	38,4 m ²
40403 72 075 4110 00000	40762	75	/ 3	1000*	600	1,70	31,2 m ²
40403 72 100 4110 00000	41012	100	/ 3	1000*	600	2,33	24,0 m ²
40403 72 125 4110 00000	41262	125	/ 3	1000*	600	2,98	19,2 m ²
40403 72 150 4110 00000	41512	150	/ 3	1000*	600	3,57	16,8 m ²
40403 72 175 4110 00000	41762	175	/ 3	1000*	600	4,17	14,4 m ²
40403 72 200 4110 00000	42012	200	/ 3	1000*	600	4,88	12,0 m ²

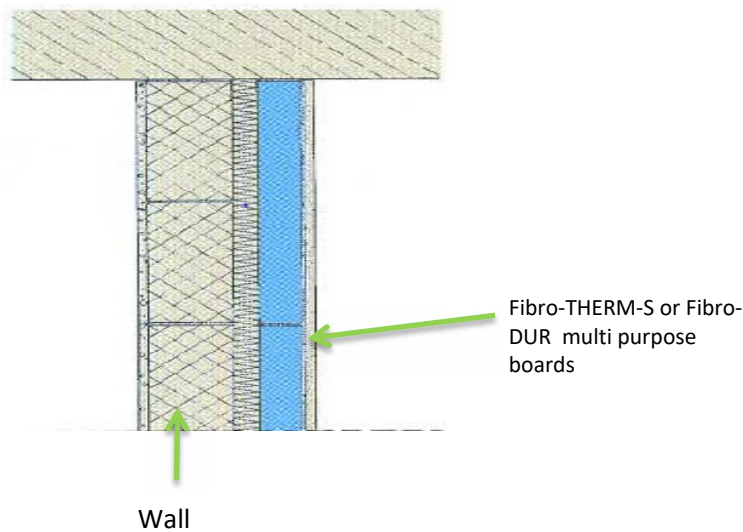
against extra charge:

rabbet edges all sides

Super-fine wood wool (approx. 1 mm width)

Closed longitudinal and/or horizontal edges

Sample: plaster base, inner side insulation



Fibro-DUR 3 - 032 SE WD nature, three layer, for retrofitting



Basement ceilings-insulation boards EPS core
 According to DIN EN 13168, WW-C/3 MW WLG 032 DI dm / WI dm
 Multi-purpose insulation board, three layered
 Polystyrene rigid foam core DIN EN 13163
 mineral bound, fine wool (approximately 2 mm fibre width)
 Application type DIN V 4108-10: WI dm / DI dm / WH dg
 C-S2, d0 flame-retardant
with straight edges, for retrofitting

New item no.	Old item no.	Thick- ness in mm	Number of layers	Standard length in mm	Standard width in mm	R _D m ² ·K/W	PU per double pal.	
35323 72 050 4110 00000		50	/ 3	2000	600	1,43	84,0	m ²
35323 72 060 4110 00000		60	/ 3	2000	600	1,76	72,0	m ²
35323 72 075 4110 00000		75	/ 3	2000	600	2,21	60,0	m ²
35323 72 100 4110 00000		100	/ 3	2000	600	3,03	48,0	m ²

Other Thicknesses on request.

against extra charge:
 see below

Fibro-DUR 2 - 032 SE WD nature, Dual layer, with straight edges, for retrofitting



Basement ceilings-insulation boards EPS core
 According to DIN EN 13168, WW-C/2 MW WLG 032 DI dm / WI dm
 Multi-purpose insulation board, Dual layer, with straight edges,
 for retrofitting. Polystyrene rigid foam core DIN EN 13163
 mineral bound, fine wool (approximately 2 mm fibre width)
 Application type DIN V 4108-10: WI dm / DI dm / WH dg
 C-S2, d0 flame-retardant
with straight edges, for retrofitting

New item no.	Old item no.	Thick- ness in mm	Number of layers	Standard length in mm	Standard width in mm	R _D m ² ·K/W	PU per double pal.	
35322 72 050 4110 00000		50	/ 2	2000	600	1,52	48,0	m ²
35322 72 060 4110 00000		60	/ 2	2000	600	1,82	38,4	m ²
35322 72 075 4110 00000		75	/ 2	2000	600	2,34	31,2	m ²
35322 72 100 4110 00000		100	/ 2	2000	600	3,13	24,0	m ²

Other Thicknesses on request.

against extra charge:
 Super-fine wood wool (approx. 1 mm width)
 rabbet edges all sides

Fibro-DUR 3 - 040 B2



Multi-purpose insulation board mit EPS-Kern
 According to DIN EN 13168, WW-C/3 MW WLG 040 DI dm / WI dm
 plaster baseplatte, three layered
 Polystyrene rigid foam core DIN EN 13163
 mineral bound, fine wool (approximately 2 mm fibre width)
 Application type DIN V 4108-10: WI dm / DI dm / WH dg
 DIN 4102: B2 normal flammability
with straight edges, for retrofitting
 Not recommended for visibility application.

New item no.	Old item no.	Thick- ness in mm	Number of layers	Standard length in mm	Standard width in mm	R _D m ² -K/W	PU per double pal.	
30403 72 025 4110 00000	3025	25	/ 3	2000	600*	0,53	120,0	m ²
30403 72 035 4110 00000	3035	35	/ 3	2000	600*	0,80	120,0	m ²
30403 72 050 4110 00000	3050	50	/ 3	2000	600*	1,19	84,0	m ²
30403 72 060 4110 00000	3060	60	/ 3	2000	600	1,46	72,0	m ²
30403 72 075 4110 00000	3075	75	/ 3	2000	600*	1,83	60,0	m ²
30403 72 100 4110 00000	3100	100	/ 3	2000	600	2,50	48,0	m ²
30403 72 125 4110 00000	3125	125	/ 3	2000	600	3,13	38,4	m ²

*We don't produce the size 2000 x 500 mm any more, today still available.

against extra charge:
 rabbet edges all sides

Fibro-light-weight-board - 090



Multi-purpose insulating boards, homogen, According to DIN EN 13168,
 WW 090 WI dm / DI dm
 wood wool board, mineral bonded
 flame-retardant, B-s1, d0,
 Perfect plaster base, ecologically sound
 for embedding in cement, or for retrofitting.
 Application type according to DIN V 4108-10: DI dm / WI dm
 Not recommended for visibility application.

New item no.	Old item no.	Thick- ness in mm	Gewicht /m ²	Standard length in mm	Standard width in mm	R _D m ² -K/W	PU per double pal.	
10901 72 015 4110 00000	1015	15		2000	0	0,20	144/240	m ²
10901 72 025 4110 00000	1026	25		2000	0	0,33	84/168	m ²
10901 72 035 4110 00000	1036	35		2000	0	0,47	67,2/120	m ²
10901 72 050 4110 00000	1051	50		2000	0	0,67	48/84	m ²

against extra charge:
 Rabbet edges for board thickness of 35 mm or more

Fibro-THERM-S /2 N - 035 A2 WD nature, dual layer, with straight edges



Basement ceilings-/basement garage insulation boards, MW core
 According to DIN EN 13168, WW-C/2 MW 035 WI dk / DI dk
 Multi-purpose insulating boards MW-core according to DIN EN 13168,
 Dual layer, with straight edges, for retrofitting
 DIN EN 13501:non-flammable, A2-s1, d0
 with mineral wool core according to DIN EN 13162, A1 non-flammable
 (DIN 4102). Fire protection F 90-AB to F 120-AB, retrofitted
 in covered car parks > 1000 m² effective area as per Garage Regulations
 (GarVo). Heightened biosolubility, does not present any health risk.
 mineral bound, fine wool (approximately 2 mm fibre width)
with straight edges, for retrofitting.

New item no.	Old item no.	Thick- ness in mm	Number of layers	Standard length in mm	Standard width in mm	R ₀ m ² -K/W	PU per double pal.	
50352 72 050 2110 00000	5058	50	/ 2	1000	600	1,28	48,0	m ²
50352 72 060 2110 00000	5068	60	/ 2	1000	600	1,58	38,4	m ²
50352 72 075 2110 00000	5085	75	/ 2	1000	600	1,97	31,2	m ²
50352 72 100 2110 00000	5107	100	/ 2	1000	600	2,70	24,0	m ²
50352 72 125 2110 00000	5135	125	/ 2	1000	600	3,38	19,2	m ²
50352 72 150 2120 00000	5156	150	/ 2	1000	600	4,17	16,8	m ²
50352 72 175 2120 00000	5182	175	/ 2	1000	600	4,86	14,4	m ²
50352 72 200 2120 00000	5206	200	/ 2	1000	600	5,56	12,0	m ²

against extra charge:
 see below

Fibro-THERM-S /2 N - 035 B1 WD nature, dual layer, with straight edges



Basement ceilings-/basement garage insulation boards, MW core
 According to DIN EN 13168, WW-C/2 MW 035 WI dk / DI dk
 Multi-purpose insulating boards MW-core according to DIN EN 13168,
 Dual layer, with straight edges, for retrofitting
 DIN EN 13501:flame-retardant, B-s1, d0
 with mineral wool core according to DIN EN 13162, A1 non-flammable
 (DIN 4102). Fire protection F 90-AB to F 120-AB, retrofitted
 in covered car parks > 1000 m² effective area as per Garage Regulations
 (GarVo). Heightened biosolubility, does not present any health risk.
 mineral bound, fine wool (approximately 2 mm fibre width)
with straight edges, for retrofitting.

New item no.	Old item no.	Thick- ness in mm	Number of layers	Standard length in mm	Standard width in mm	R ₀ m ² -K/W	PU per double pal.	
40352 72 050 2110 00000	4059	50	/ 2	1000	600	1,28	48,0	m ²
40352 72 060 2110 00000	4070	60	/ 2	1000	600	1,58	38,4	m ²
40352 72 075 2110 00000	4084	75	/ 2	1000	600	1,97	31,2	m ²
40352 72 100 2110 00000	4112	100	/ 2	1000	600	2,70	24,0	m ²
40352 72 125 2110 00000	4136	125	/ 2	1000	600	3,38	19,2	m ²
40352 72 150 2120 00000	4157	150	/ 2	1000	600	4,17	16,8	m ²
40352 72 175 2120 00000	4180	175	/ 2	1000	600	4,86	14,4	m ²
40352 72 200 2120 00000	4206	200	/ 2	1000	600	5,56	12,0	m ²

against extra charge:
 Super-fine wood wool (approx. 1 mm width)
 small beveled edges
 Closed longitudinal and/or horizontal edges

Fibro-insulating anchor, galvanized



Metal anchor with special expanding pin for bore hole \varnothing 8 mm, disc \varnothing 35 mm
 Requirement: at least 6 pieces/board at a board length of 2000 mm, at least 4 pieces/board at a board length of 1000 mm

New item no.	Old item no.	for board	anchor		content pieces
		thickness in mm	length		
808101	8101	35	80	mm	250
808102	8102	50 / 60	110	mm	250
808103	8103	75 / 100	140	mm	250
808104	8104	125	170	mm	250
808105	8105	150	200	mm	250
808106	8106	160/175/200	250	mm	200

Fibro-insulating anchor, steel A2



Metal anchor with special expanding pin for bore hole \varnothing 8 mm, disc \varnothing 35 mm,
 Requirement: at least 6 pieces/board at a board length of 2000 mm, at least 4 pieces/board at a board length of 1000 mm

New item no.	Old item no.	for board	anchor		content pieces
		thickness in mm	length		
808001	8001	35	80	mm	250
808002	8002	35 / 50 / 60	110	mm	250
808003	8003	75 / 100	140	mm	250
808004	8004	125	170	mm	250
808005	8005	150	200	mm	250
808006	8006	160/175/200	250	mm	200

Fibro-cover caps, wood wool texture



Cover caps for insulating anchor, galvanized or steel A2
available in white, or beige
 \varnothing 35 mm

New item no.	Old item no.	Colour	content pieces
808010	8010	white	250
808011	8011	beige	250

Concrete screw DDS



Rust-protected steel screw with special thread.

To fasten wood wool and multi-layer

boards directly to concrete. \varnothing head approx. 25 mm, \varnothing bore hole: 6 mm,

\varnothing bore hole: 6 mm, installation depth: approx. 25 mm

Requirement: at least 6 pieces/board at a board length of 2000 mm,
at least 4 pieces/board at a board length of 1000 mm

New item no.	Old item no.	for board thickness in mm	anchor length	Colour	content pieces
808906	8906	25	50 mm	white	100
808908	8908	35 / 50	75 mm	white	100
808910	8910	60	85 mm	white	100
808912	8912	75	100 mm	white	100
808914	8914	100	125 mm	white	100
808916	8916	125	150 mm	white	100
808918	8918	150	175 mm	white	100
808920	8920	175	200 mm	white	100
808907	8907	25			
808909	8909	35 / 50			
808911	8911	60			
808913	8913	75			
808915	8915	100			
808917	8917	125			

Fibrolith - stall ventilation panels



wood-wool light-weight board WW according to DIN EN 13168
 wood-wool board, white cement, fine wool (approximately 2 mm)
 flame-retardant, B-s1, d0 non-smoldering
 ecologically sound, good sound absorption
 WI dm / DI dm
 Vapor-permeable ceiling paneling for agricultural constructions
 For optimal ventilation
 e.g. For pigsties, stables, etc.

price including large beveled edges

New item no.	Old item no.	Thick- ness in	Gewicht /m ²	Standard length in mm	Standard width in mm	R ₀ m ² -K/W	PU per double pal.	
60 901 7 2 025 42 0000000	2525	25	9,5	2400	600	0,28	115,2	m ²
60 901 7 2 025 22 0000000	2525	25	9,5	1200	600	0,28	57,6	m ²

For new stables or renovations:
 Fibrolith stall ventilation panels



source: Haka Lüftungstechnik



source: Moser Lüftungstechnik

Fibro-Edge Profile L



for use when covering the sides of beams and lintels with Fibro-THERM-S boards

Thickness = 0,7 mm

galvanized:

New item no.	Old item no.	for board		Profile-		Colour	content
		thickness in mm		length			
857029	7029	50	mm	3000	mm	galvanized	10
857030	7030	60	mm	3000	mm	galvanized	10
857031	7031	75	mm	3000	mm	galvanized	10
857033	7033	100	mm	3000	mm	galvanized	10
857034	7034	125	mm	3000	mm	galvanized	10
857035	7035	150	mm	3000	mm	galvanized	10
857036	7036	175	mm	3000	mm	galvanized	10
857037	7037	200	mm	3000	mm	galvanized	10

white coated:

New item no.	Old item no.	for board		Profile-		Colour	content
		thickness in mm		length			
857111	7111	50	mm	3000	mm	white	10
857112	7112	60	mm	3000	mm	white	10
857113	7113	75	mm	3000	mm	white	10
857114	7114	100	mm	3000	mm	white	10
857119	7119	125	mm	3000	mm	white	10
857121	7121	150	mm	3000	mm	white	10
857122	7122	175	mm	3000	mm	white	10
857123	7123	200	mm	3000	mm	white	10

Fibro-Express-Nail



for fastening Fibro end profiles L

New item no.	Old item no.	für L-Profile	Nail-		content
			length		
807200	7200	6/60	60 mm		100

Fibro-Edge Profile F



to use if the top and bottom sides
of beams and lintels are covered with Fibro Therm-S
boards

Thickness = 0,7 mm

galvanized:

New item no.	Old item no.	for board		Profile-		Colour	content
		thickness in mm		length			
857014	7014	50	mm	3000	mm	galvanized	10
857015	7015	60	mm	3000	mm	galvanized	10
857016	7016	75	mm	3000	mm	galvanized	10
857017	7017	100	mm	3000	mm	galvanized	10
857018	7018	125	mm	3000	mm	galvanized	10
857019	7019	150	mm	3000	mm	galvanized	10
857022	7022	175	mm	3000	mm	galvanized	10
857023	7023	200	mm	3000	mm	galvanized	10

white coated:

New item no.	Old item no.	for board		Profile-		Colour	content
		thickness in mm		length			
857115	7115	50	mm	3000	mm	white	10
857116	7116	60	mm	3000	mm	white	10
857117	7117	75	mm	3000	mm	white	10
857118	7118	100	mm	3000	mm	white	10
857120	7120	125	mm	3000	mm	white	10
857124	7124	150	mm	3000	mm	white	10
857125	7125	175	mm	3000	mm	white	10
857126	7126	200	mm	3000	mm	white	10

The European Standards

Table 1 Areas of application of heat insulation set forth in DIN V 4108-10:2003

Area of Application	Examples of Applications	Abbreviation
Ceiling, roof	Exterior insulation of roof or ceiling, weather protection, insulation under coverings	DAD
	Exterior insulation of roof or ceiling, weather protection, insulation under sealants	DAA
	Exterior roofing insulation exposed to weather (inverted roof)	DUK
	Intermediary insulation of a double layer roof, not walkable, but accessible upper floor ceilings	DZ
	Interior insulation of the ceiling (beneath) or of the roof, insulation under beams / structural members, suspended ceilings, etc.	DI
	Interior insulation of the ceiling or the floor board (top) under the screed without sound-proofing requirements	DEO
	Interior insulation of the ceiling or the floor board (top) under the screed with sound proofing requirements	DES
Wall	Exterior insulation of the wall behind the façade	WAB
	Exterior insulation of the wall behind the wall sealant	WAA
	Exterior insulation of the wall underneath plaster	WAP
	Insulation of double layer walls, core insulation	WZ
	Insulation of wood frames and wood frame buildings	WH
	Interior wall insulation	WI
	Insulation between house partition walls with sound-proofing requirements	WTH
	Insulation of room partition walls	WTR

Table 2 Differentiation of certain product properties from DIN V 4108-10:2003

Supplemental identification for product properties and examples (excerpt)

No compression strength	Insulation of hollow spaces, insulation between beams	dk
Low compression strength	Living area and office area under screed	dg
Medium compression strength	An unused insulated roof	dm
High compression strength	Used roof surfaces, terraces	dh

Deliveries to warehouse addresses do not include unloading.
Unloading is performed by the recipient via forklift or a wheel loader from the side.

In the case of deliveries to construction sites, if nothing different was ordered, the goods are loaded onto the vehicle in such a way that the construction site crane can perform unloading.

For unloading, a time window of 2 hours shall be available. From the 3rd hour on, the downtime will be charged at a rate of EUR 80.00 for every hour begun.

Our freight forwarders have semitrailers and articulated trains available. Exterior height max. 4.10 m.



For further information and contact persons for your individual questions and requests, please visit www.fibrolith.de/en

11.2019

Fibrolith Dämmstoffe GmbH

An der L83

D-56746 Kempenich

Phone: +49 (0) 26 55 / 95 92-0

Fax: +49 (0) 26 55 / 95 92-18

E-Mail: info@fibrolith.de

