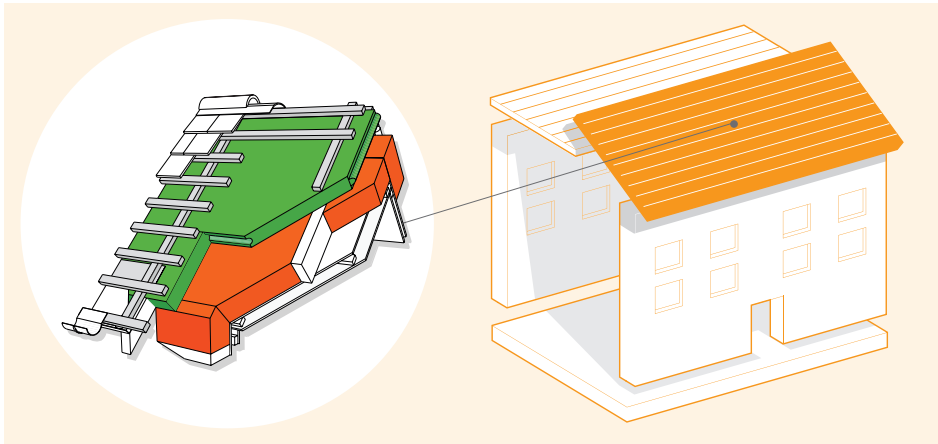


# UNITY LIME PITCHED ROOF

# UNITY LIME PITCHED ROOF

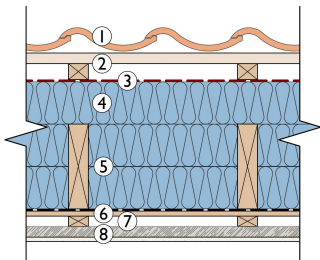


## Unity Lime Pitched Roof

Unity Lime Pitched Roof  
 Unity Lime Pitched Roof  
 Unity Lime Pitched Roof

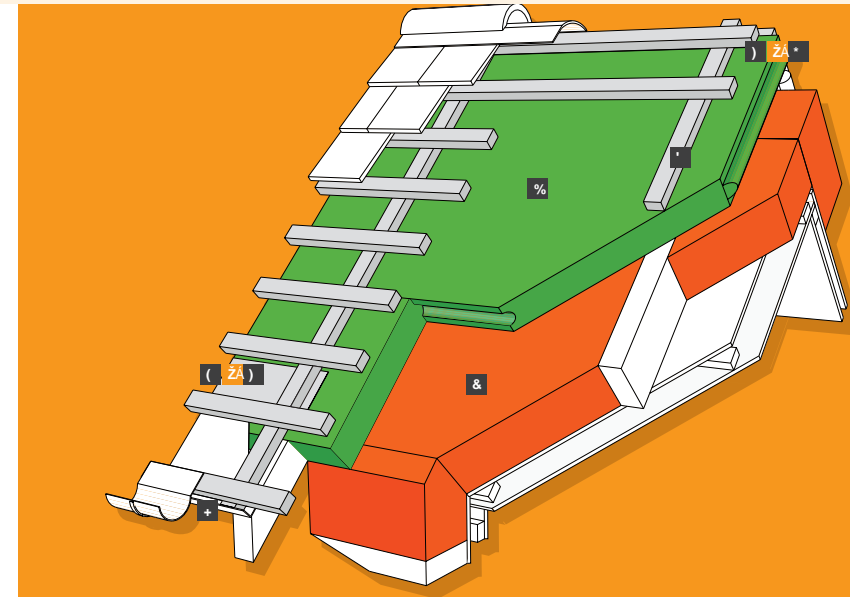
The system complies with the most stringent of standards – from baseline building regulations through to Passivhaus. The system is suitable for most external finishing options including metal, clay or slate tiling etc. All components for the system are available from Unity Lime.

## Roof Construction Details



- 1) Roofing (tiles, slates, sheeting etc.)
- 2) Min 50mm ventilation one.
- 3) (Optional) Breathable Membrane
- 4) Above Rafter Insulation
  - ISOLAIR
  - COMBI (Membrane required)
- 5) Between Rafter Insulation
  - PAVAFLEX
  - PAVATEXIL-P
- 6) Airtightness & Racking (OSB3/DB3.5 MEMBRANE)
  - Taped with PAVAFIX
- 7) Service void 25mm - optional (can be insulated for improved performance)
- 8) Plaster carrying board + skim

## Unity Lime Pitched Roof



OSB3/DB3.5	D5 J5 : @L'cf D5 J5 H9 LH-@D	HCD-L*	D5 J5 H5 D9 +)
	PAVAPRIM PRIMER	PAVATAPE 150	
EAVES VENTS			

Unity Lime Pitched Roof  
 Unity Lime Pitched Roof  
 Unity Lime Pitched Roof