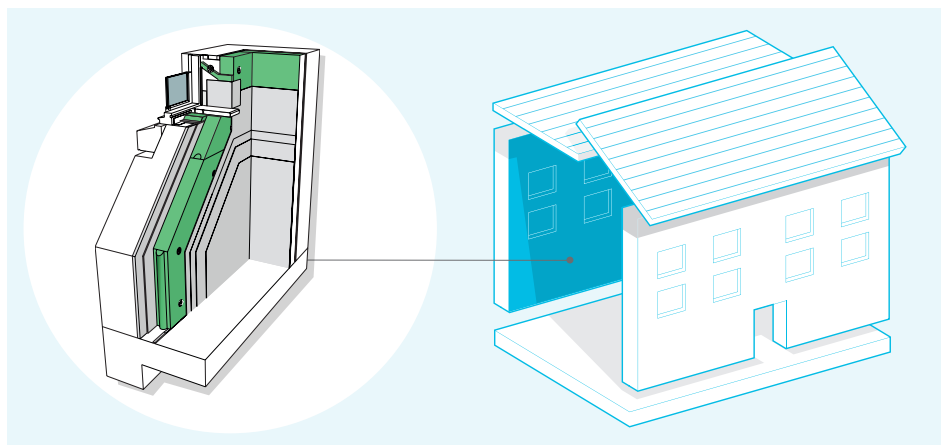


Retrofit System for Internal Wall Insulation Lime Plastered Finish



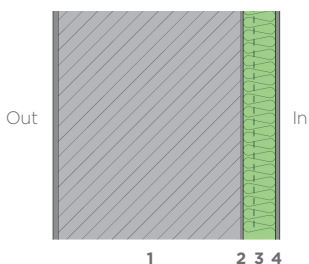
System Performance

u - values 0.60 - 0.28

airtightness 5 - 3 @50pa

A highly effective solution that eliminates the moisture risk associated with IWI. NBT IWI systems use **Pavadentro** to provide active moisture control through absorption and redistribution of moisture within a woodfibre board and integral mineral layer. The system combines the best of modern technological advances with natural, traditional materials; finished with a two-coat lime plaster that perfectly compliments traditional and modern wall finishes.

Cross-section of system

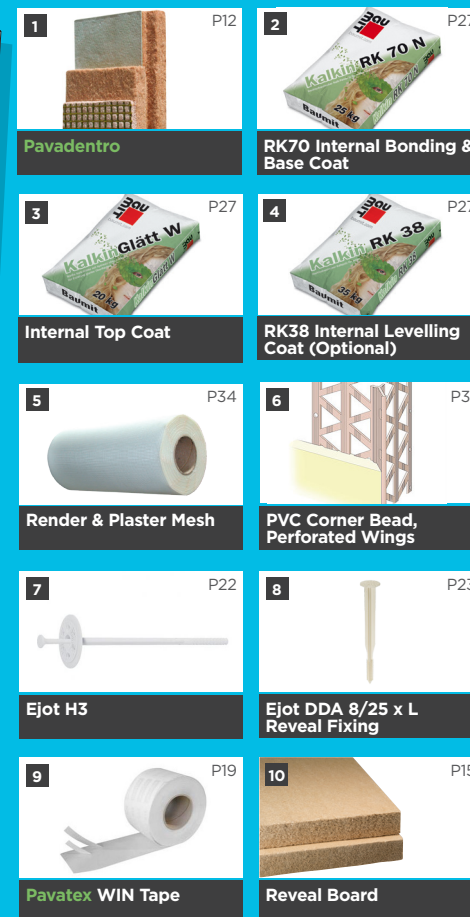
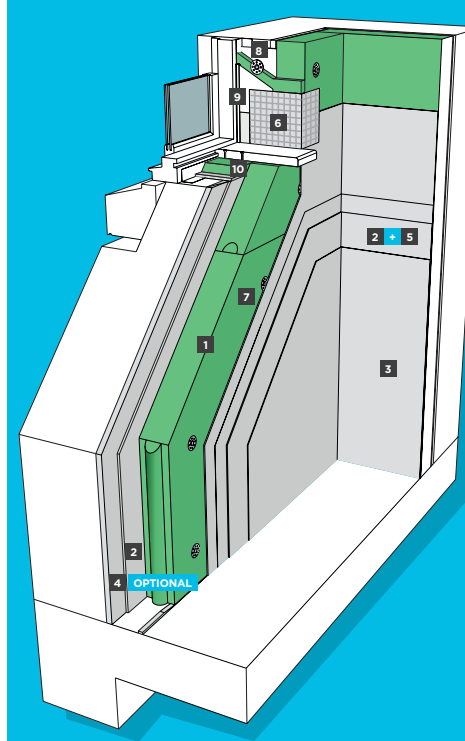


1. External wall (masonry/stone)
2. NBT absorbent plaster (min 5mm)
3. NBT PAVADENTRO
4. Two-coat meshed lime finish

How NBT systems compare to standard build



Components & Accessories for NBT Internal Wall Insulation System Lime Plastered Finish



* Please refer to www.natural-building.co.uk or the contents page of this pack to find more information about the range of NBT products

System build up

