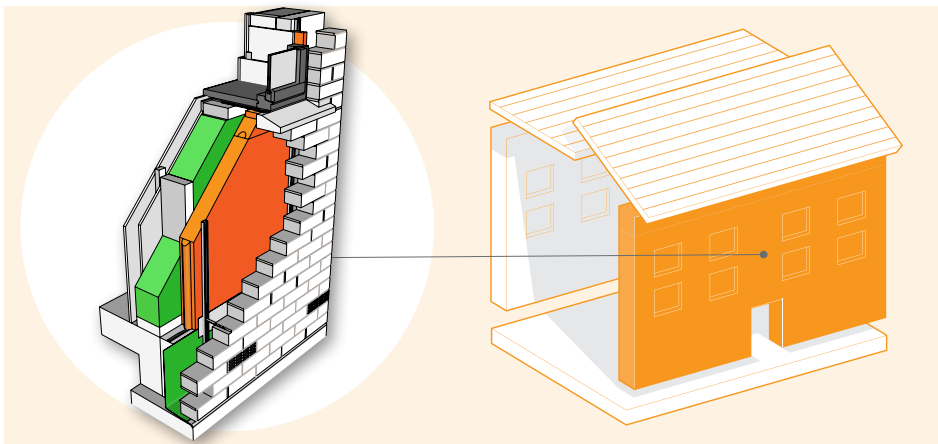


New Build System for Timber Frame Brick Clad



System Performance

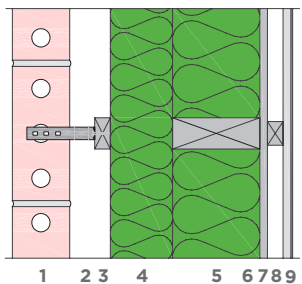
u - values 0.26 - 0.10

y - values 0.05 - 0.02

airtightness 5 - 0.6 @50pa

The system complies with the most stringent of standards - from baseline building regulations through to Passivhaus. The system is suitable for most external clad options including brick & stone. All components for the system are available from NBT.

Cross-section of system

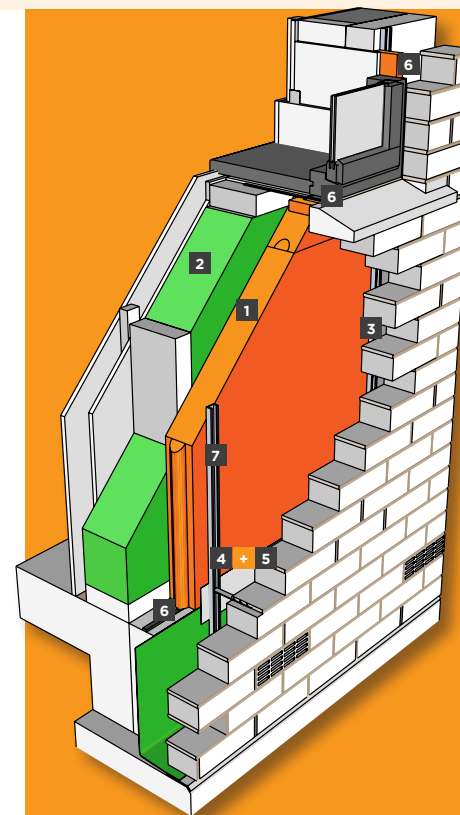


1. Brick Clad
2. Brick Ties
3. Timber Batten
4. NBT ISOLAIR 20/35 mm or NBT PAVATHERM-PLUS* 60/80/100/120 mm
5. Stud & NBT PAVAFLEX
6. Racking board incl. airtightness detail (e.g. OSB 12/15 mm)
7. Service void 25 mm - optional (can be insulated for improved performance)
8. Plasterboard 12.5 mm
9. Plaster, skim and NBT emulsion paint

How NBT systems compare to standard build



Components & Accessories for NBT System for Timber Frame: Brick Clad



* Please refer to www.natural-building.co.uk or the contents page of this pack to find more information about the range of NBT products

** Not supplied by NBT

System build up