

1 PAVATEX DB 3.5

Vapour control membrane



20

PAVATEX DB 3.5 is deployed as an airtight vapour control layer with vapour-open roof and wall constructions.

PAVATEX DB 3.5 is laid on the warm side of the insulation. The gluing of membrane joints as well as the taping of connections and penetrations are carried out with PAVATEX airtight products.



Technical specifications

| | | |
|----------------------------|---|--|
| Material | Polypropylene fleece with polyolefinic-copolymere coating | |
| Thickness | 0.43 mm | |
| Diffusion resistance μ | 7 000 | |
| s_d -value | 3.5 m | |
| Weight | 110 g/m ² ($\pm 10\%$) | |
| Fire properties | DIN EN 13501-1 E | |
| Extension | long. 50% trans. 60% | |
| Maximum tensile force | long. 180 N/5cm trans. 140 N/5cm | |
| Nail tear strength | long. 130 N trans. 140 N | |
| CE | EN 13984 | |

Advantages:

- Light and dimensionally stable
- Tear-proof and smooth
- Slightly transparent
- New marking that serves as cutting aid

Delivery form

| | |
|-------------|----------------------|
| Roll width | 1.50 m |
| Roll length | 50.00 m |
| Roll area | 75.00 m ² |
| Roll weight | 9 kg |

Storage

Rolls to be stored lying or standing in a dry place that is protected against exposure to the sun and moisture

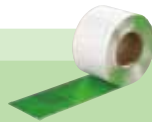


**PAVACOLL 310 / 600**

Page 25

**PAVATAPE 20**

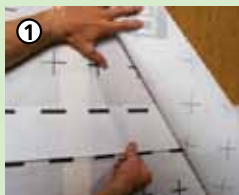
Page 32

**PAVATAPE FLEX**

Page 33

**PAVAFIX 60**

Page 34



Guidelines for professional installation:

Membranes need to be connected draught-free and overlapped. If tensile forces may occur, it is essential to provide mechanical safeguards and to install bypass loops.

Installation of PAVATEX DB 3.5

- ① Stick PAVATEX DB 3.5 onto the rafters and holders before fitting interior membrane. Overlapped areas need to be taped airtight with PAVAFIX 60.
- ② Remove backing paper from PAVAFIX 60, position centrally and fix. Continuously remove backing paper, glue PAVAFIX 60 avoiding wrinkles and press on firmly.

Connection with PAVATAPE 20.

- ③ Apply PAVATAPE 20 on the building component. Remove protective paper. PAVATEX DB 3.5 must be pressed on in a draught- and wrinkle-free manner. On porous surfaces, it is advisable to apply PAVAPRIM or PAVABASE as an substrate pretreatment.

Penetrations with PAVATAPE FLEX

- ④ Unroll tape, remove backing paper, apply evenly and press on by hand. Please ensure that PAVATAPE FLEX is not overstretched.

1 PAVATEX Air and Wind-Tight Products and their applications at a glance...

10

| | Butyl tapes | | | Acrylic tapes | | Adhesives |
|---|-----------------|---------------|-------------|--|-----------------|------------------|
| | PAVATAPE 75/150 | PAVATAPE FLEX | PAVATAPE 20 | PAVAFIX 60 | PAVAFIX SN BAND | PAVACOLL 310/600 |
| Gluing onto PAVATEX wood fibre boards | | | | | | |
| ISOLAIR L/ISOROOF-NATUR | 👍* | 👍* | | | | 👍 |
| PAVATHERM-PLUS | 👍* | 👍* | | | | 👍 |
| PAVATEX under-roof board bituminised | 👍* | 👍* | | | | 👍 |
| PAVISO ¹⁾ | 👍* | 👍* | | | | |
| PAVAROOF-K ¹⁾ | 👍* | 👍* | | | | |
| PAVAROOF-W Plus ¹⁾ | 👍* | 👍* | | | | |
| PAVAPLAN 3F ¹⁾ | 👍* | 👍* | | 👍 | | |
| Gluing onto PAVATEX membranes | | | | | | |
| PAVATEX LDB 0.02 | | 👍 | 👍 | 👍 | | 👍 |
| PAVATEX ADB | 👍 | 👍 | 👍 | | 👍 | 👍 |
| PAVATEX DSB 2 | | 👍 | 👍 | 👍 | | 👍 |
| PAVATEX DB 3.5 | | 👍 | 👍 | 👍 | | 👍 |
| PAVATEX DB 28 | | 👍 | 👍 | 👍 | | 👍 |
| PAVATEX RSP | | 👍 | 👍 | 👍 | | 👍 |
| At connections and penetrations/joint gaps adhering together on... | | | | | | |
| Chipboards | 👍* | 👍* | 👍* | 👍 | | 👍 |
| Medium-density wood-fibre boards | 👍* | 👍* | 👍* | 👍 | | 👍 |
| OSB | 👍* | 👍* | 👍* | 👍 | | 👍 |
| Timber, planed | 👍* | 👍* | 👍* | 👍 | 👍 | 👍 |
| Timber, raw | 👍* | 👍* | 👍* | 👍* | 👍 | 👍 |
| Cement-bonded chipboards | 👍* | 👍* | 👍* | 👍* | | 👍 |
| Plasterboards | 👍* | 👍* | 👍* | 👍* | | 👍 |
| Gypsum-fibre boards | 👍* | 👍* | 👍* | 👍* | | 👍 |
| Concrete, smooth | 👍* | 👍* | 👍* | 👍* | | 👍 |
| Plaster, mortar, gypsum | 👍* | 👍* | 👍* | 👍* | | 👍 |
| Concrete, rough | 👍* | 👍* | 👍* | | | 👍 |
| Bricks | 👍* | 👍* | 👍* | | | 👍 |
| Metals, corrosion-protected | 👍 | 👍 | 👍 | 👍 | | 👍 |
| Plastics (PE and PVC) | 👍 | 👍 | 👍 | 👍 | | |
| Bitumen | 👍 | 👍 | 👍 | | | |
| (When in doubt, one needs to carry out one's own gluing attempts) | | | | * substrate needs to be pretreated with PAVAPRIM or PAVABASE | | |
| ¹⁾ Only sold in CH | | | | | | |